



Mud Lake Campground

- 1 Accessible gravel trails around campground
- 2 Visitor/day use parking
- 3 Picnic area with temporary signage about project and site, temporary washrooms, and temporary vending machines
- 4 Boat Launch Parking

Adventure Area

- 1 Day use parking
- 2 Accessible trail loop around cycle sports area
- 3 Accessible trail to Upper Reservoir trail and Lower Reservoir trail
- 4 Picnic area with temporary signage about project and site, temporary washrooms, and temporary vending machines

Education Area

- 1 Parking
- 2 Parking for Hasting Heritage Trail vehicles (ATVs, snowmobiles, etc.)
- 3 Education trail loop with water line access to flood the loop for winter skate trail use
- 4 Education facility
- 5 Accessible trail links to Adventure Area, Lower Reservoir, Mud Lake, Mud Lake Campground, and All-Season Botanical Gardens

Visitor Centre

- 1 Accessible gravel and paved trails
- 2 Parking lots – visitor parking and bus parking
- 3 Trail around first tier from top of mine with lookouts, tourist binoculars and picnic areas
- 4 Picnic area with temporary signage about project and site, temporary washrooms, and temporary vending machines
- 5 Artistic water level marker in mine to illustrate how pumped storage affects the mine's water levels

Northland Power Pumped Storage Facility

- 1 Lookout to Open Pit Mine with tourist binoculars
- 2 Lookout to Village of Marmora with tourist binoculars
- 3 Lookout and picnic area with tourist binoculars, rest facilities and amenities
- 4 Operations Centre
- 5 Switch yard
- 6 Spillway
- 7 Hydro corridor
- 8 Link to existing trail
- 9 200 Step Climb
- 10 Upper Reservoir accessible trail

Main Entrance

- 1 Rejuvenated panoramic lookout with tourist binoculars
- 2 Day use parking
- 3 Welcome sign
- 4 Visitor information-site map, picnic area, rest facilities and amenities
- 5 Accessible trail connection to top of mine, 200 step climb, Nayler's Common, and Village of Marmora
- 6 Temporary Gateway sign

Community Connections

- 1 Trail access to Hwy 14/ Stirling-Marmora Road
- 2 Road access to Hwy 14/ Stirling-Marmora Road
- 3 Trail access to Burstshall Street
- 4 Trail and road access to Hastings Avenue

Legend

- Existing Trail
- Recharge Marmora Trails
- Roads
- Controlled Road
- Hydro Corridor
- Existing Lookout
- H.P. 250m Highest Point



TIER ONE MASTERPLAN

RECHARGE MARMORA TOURISM PLAN
MARMORA, ONTARIO

SCALE: 1 to 5000
SEPTEMBER 2016
JOB NO.: 15-33



NOTE: Implementation of the Master Plan will remain subject to the completed construction of the pumped storage facility, including any necessary barriers, controlled points or other design elements required for the facility to ensure its effective, safe, secure, and unimpeded operation.

Mud Lake Campground

- 1 Accessible gravel trails around campground
- 2 Visitor/day use parking
- 3 Registration office with sundries store
- 4 Boat Launch Parking
- 5 Garbage and recycling stations
- 6 Water and waste stations
- 7 Shoreline walk-in sites, tent sites, RV sites, cabins, yurts, and glamping
- 8 Comfort station
- 9 Accessible boardwalk to Adventure Area
- 10 Accessible boardwalk
- 11 Night sky viewing area with tourist telescopes and binoculars
- 12 Equipment rental for canoes, kayaks, paddleboards, bikes, hand bikes, snow shoes, cross country skis, binoculars

Adventure Area

- 1 Day use parking
- 2 Accessible trail loop around cycle sports area
- 3 Accessible trail to Upper Reservoir trail and Lower Reservoir trail
- 4 Canteen with rest facilities and amenities, equipment rental for gravel boards, toboggans, bikes, hand bikes, snow shoes, cross country skis, tubes, binoculars
- 5 BMX tracks – XC (Cross Country), 4X (Four Cross), Pump, and Downhill
- 6 Gravel boarding/tobogganing
- 7 Chair lift
- 8 Zip line to Visitor Centre

Education Area

- 1 Parking
- 2 Parking for Hasting Heritage Trail vehicles (ATVs, snowmobiles, etc.)
- 3 Education trail loop with water line access to flood the loop for winter skate trail use
- 4 Education facility
- 5 Accessible trail links to Adventure Area, Lower Reservoir, Mud Lake, Mud Lake Campground, and All-Season Botanical Gardens

Visitor Centre

- 1 Accessible gravel and paved trails
- 2 Parking lots – visitor parking and bus parking
- 3 Trail around first tier from top of mine with lookouts, tourist binoculars and picnic areas
- 4 Visitor Centre/museum/eatery
- 5 Artistic water level marker in mine to illustrate how pumped storage affects the mine's water levels
- 6 Patio with glass balcony, accessible pedestrian glass bridge to trails, and tourist binoculars



- Northland Power Pumped Storage Facility**
- 1 Lookout to Open Pit Mine with tourist binoculars
 - 2 Lookout to Village of Marmora with tourist binoculars
 - 3 Lookout and picnic area with tourist binoculars, rest facilities and amenities
 - 4 Operations Centre
 - 5 Switch yard
 - 6 Spillway
 - 7 Hydro corridor
 - 8 Link to existing trail
 - 9 200 Step Climb
 - 10 Upper Reservoir accessible trail

- Main Entrance**
- 1 Rejuvenated panoramic lookout with tourist binoculars
 - 2 Day use parking
 - 3 Welcome sign
 - 4 Visitor information-site map, picnic area, rest facilities and amenities
 - 5 Accessible trail connection to top of mine, 200 step climb, Naylor's Common, and Village of Marmora
 - 6 Gateway sign

- Community Connections**
- 1 Trail access to Hwy 14/ Stirling-Marmora Road
 - 2 Road access to Hwy 14/ Stirling-Marmora Road
 - 3 Trail access to Burstall Street
 - 4 Trail and road access to Hastings Avenue
 - 5 New Naylor's Common Boardwalk

Legend

- Existing Trail
- Recharge Marmora Trails
- Roads
- Controlled Road
- Hydro Corridor
- Existing Lookout
- H.P. 250m Highest Point
- Boardwalks



TIER TWO MASTERPLAN

RECHARGE MARMORA TOURISM PLAN
MARMORA, ONTARIO

SCALE: 1 to 5000
SEPTEMBER 2016
JOB NO.: 15-33



NOTE: Implementation of the Master Plan will remain subject to the completed construction of the pumped storage facility, including any necessary barriers, controlled points or other design elements required for the facility to ensure its effective, safe, secure, and unimpeded operation.

Mud Lake Campground

- 1 Accessible gravel trails around campground
- 2 Visitor/day use parking
- 3 Registration office with sundries store
- 4 Boat Launch Parking
- 5 Garbage and recycling stations
- 6 Water and waste stations
- 7 Shoreline walk-in sites, tent sites, RV sites, cabins, yurts, and glamping
- 8 Comfort station
- 9 Accessible boardwalk to Adventure Area
- 10 Accessible boardwalk to All-Season Botanical Gardens
- 11 Night sky viewing area with tourist telescopes and binoculars
- 12 Equipment rental for canoes, kayaks, paddleboards, bikes, hand bikes, snow shoes, cross country skis, binoculars

Adventure Area

- 1 Day use parking
- 2 Accessible trail loop around cycle sports area
- 3 Accessible trail to Upper Reservoir trail and Lower Reservoir trail
- 4 Canteen with rest facilities and amenities, equipment rental for gravel boards, toboggans, bikes, hand bikes, snow shoes, cross country skis, tubes, binoculars
- 5 BMX tracks – XC (Cross Country), 4X (Four Cross), Pump, and Downhill
- 6 Gravel boarding/tobogganing
- 7 Chair lift
- 8 Zip line to Visitor Centre

Education Area

- 1 Parking
- 2 Parking for Hasting Heritage Trail vehicles (ATVs, snowmobiles, etc.)
- 3 Education trail loop with water line access to flood the loop for winter skate trail use
- 4 Education facility
- 5 Accessible trail links to Adventure Area, Lower Reservoir, Mud Lake, Mud Lake Campground, and All-Season Botanical Gardens

Visitor Centre

- 1 Accessible gravel and paved trails
- 2 Parking lots – visitor parking and bus parking
- 3 Trail around first tier from top of mine with lookouts, tourist binoculars and picnic areas
- 4 Visitor Centre/museum/eatery
- 5 Artistic water level marker in mine to illustrate how pumped storage affects the mine's water levels
- 6 Patio with glass balcony, accessible pedestrian glass bridge to trails, and tourist binoculars

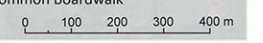


- #### Northland Power Pumped Storage Facility
- 1 Lookout to Open Pit Mine with tourist binoculars
 - 2 Lookout to Village of Marmora with tourist binoculars
 - 3 Lookout and picnic area with tourist binoculars, rest facilities and amenities
 - 4 Operations Centre
 - 5 Switch yard
 - 6 Spillway
 - 7 Hydro corridor
 - 8 Link to existing trail
 - 9 200 Step Climb
 - 10 Upper Reservoir accessible trail

- #### Main Entrance
- 1 Rejuvenated panoramic lookout with tourist binoculars
 - 2 Day use parking
 - 3 Welcome sign
 - 4 Visitor information-site map, picnic area, rest facilities and amenities
 - 5 Accessible trail connection to top of mine, 200 step climb, Nayler's Common, and Village of Marmora
 - 6 Gateway sign

- #### All-Season Botanical Garden
- 1 Entrance sign
 - 2 Gift shop and information centre
 - 3 Parking
 - 4 Wetland garden
 - 5 Accessible boardwalk connection to Mud Lake
 - 6 Accessible trail connection to Mud Lake Campground
 - 7 Greenhouses and butterfly gardens

- #### Community Connections
- 1 Trail access to Hwy 14/ Stirling-Marmora Road
 - 2 Road access to Hwy 14/ Stirling-Marmora Road
 - 3 Trail access to Bursthall Street
 - 4 Trail and road access to Hastings Avenue
 - 5 New Nayler's Common Boardwalk



Legend

- Existing Trail
- Recharge Marmora Trails
- Roads
- Controlled Road
- Hydro Corridor
- Existing Lookout
- H.P. 250m Highest Point
- Boardwalks



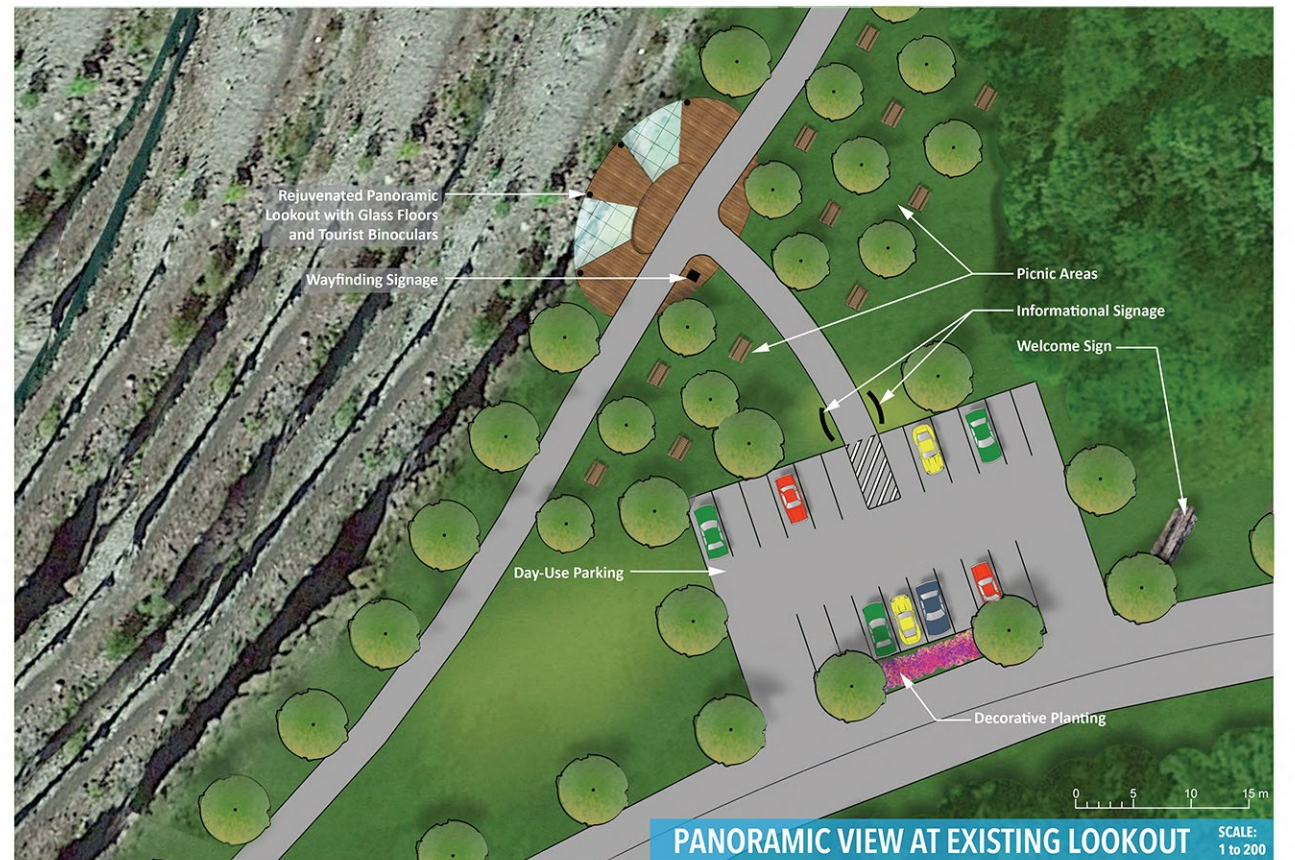
TIER THREE MASTERPLAN

RECHARGE MARMORA TOURISM PLAN
MARMORA, ONTARIO

SCALE: 1 to 5000
SEPTEMBER 2016
JOB NO.: 15-33



NOTE: Implementation of the Master Plan will remain subject to the completed construction of the pumped storage facility, including any necessary barriers, controlled points or other design elements required for the facility to ensure its effective, safe, secure, and unimpeded operation.



ENLARGEMENT PLANS

NOTE: Implementation of the Master Plan will remain subject to the completed construction of the pumped storage facility, including any necessary barriers, controlled points or other design elements required for the facility to ensure its effective, safe, secure, and unimpeded operation.

RECHARGE MARMORA TOURISM PLAN
MARMORA, ONTARIO

SEPTEMBER 2016
JOB NO.: 15-33





ENLARGEMENT PLAN AT CENTRAL HUB

RECHARGE MARMORA TOURISM PLAN
MARMORA, ONTARIO

SEPTEMBER 2016
JOB NO.: 15-33



NOTE: Implementation of the Master Plan will remain subject to the completed construction of the pumped storage facility, including any necessary barriers, controlled points or other design elements required for the facility to ensure its effective, safe, secure, and unimpeded operation.



CYCLE SPORTS 1



VISITORS CENTRE 3



MUD LAKE BOARDWALK 2



ALL SEASON USE OF TRAILS 4



SITE MAP



MAIN ENTRANCE 5



PHOTO REALISTIC ILLUSTRATIONS

RECHARGE MARMORA TOURISM PLAN SEPTEMBER 2016
MARMORA, ONTARIO JOB NO.: 15-33

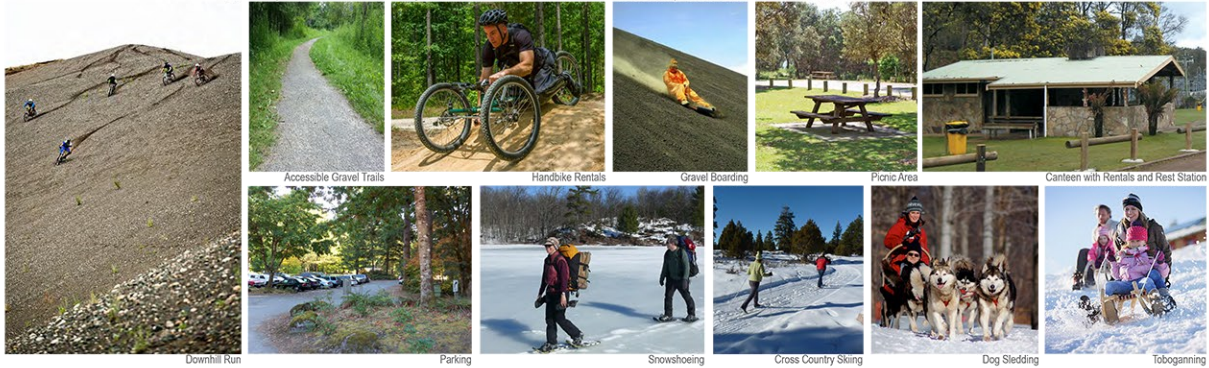


NOTE: Implementation of the Master Plan will remain subject to the completed construction of the pumped storage facility, including any necessary barriers, controlled points or other design elements required for the facility to ensure its effective, safe, secure, and unimpeded operation.



BMX Racing

Situated among the built landscape left over from the Marmoraton Mine, the Adventure Area is host to a Zip Line, a BMX track, downhill x-cross run, and a gravel boarding hill that highlight the intricacies and scale of the slag heaps. With access from Highway 14/Stirling-Marmora Road, this area has day use parking for the Adventure Area and the Hastings Heritage Trail along with a canteen, rest station and amenities, and picnic area that visitors can view the Adventure Area activities from. Accessible gravel trails throughout this area lead visitors around the site and to the top of the slag heaps to scenic lookouts over the Adventure Sports Area and Mud Lake. Across from the day-use parking lot visitors can rent various equipment including but not limited to bikes, hand bikes, kayaks, canoes, snowshoes, and cross country skis from the rental kiosk.

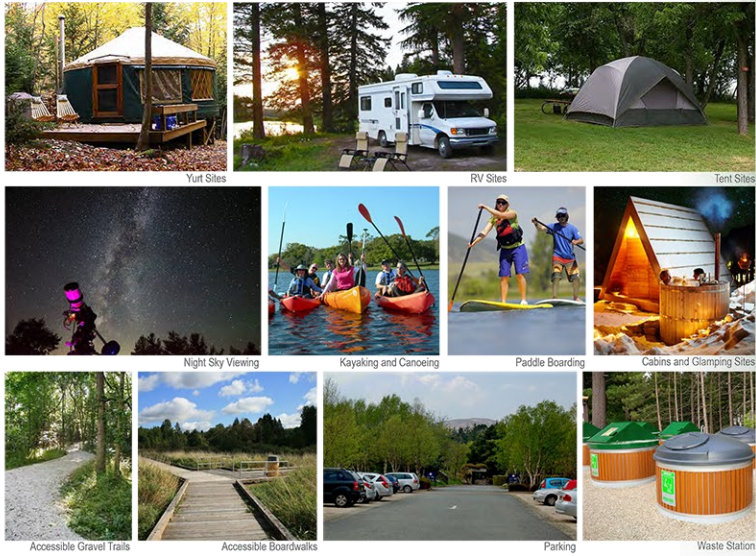


MUD LAKE CAMPGROUND

Mud Lake Campground offers a range of sites; from traditional camping to 'glamping', a range of visitors can be comfortable here. A registration office with concessions store and visitor/day parking introduce the campground and is equipped with comfort stations, various types of campsites including tents and cabins, and separate garbage and recycling waste stations. Accessible gravel trails throughout the campground lead visitors to boardwalks and equipment rentals for Mud Lake, and the All-Season Botanical Gardens through the Wetland Garden boardwalks. A night sky viewing area is also located here.

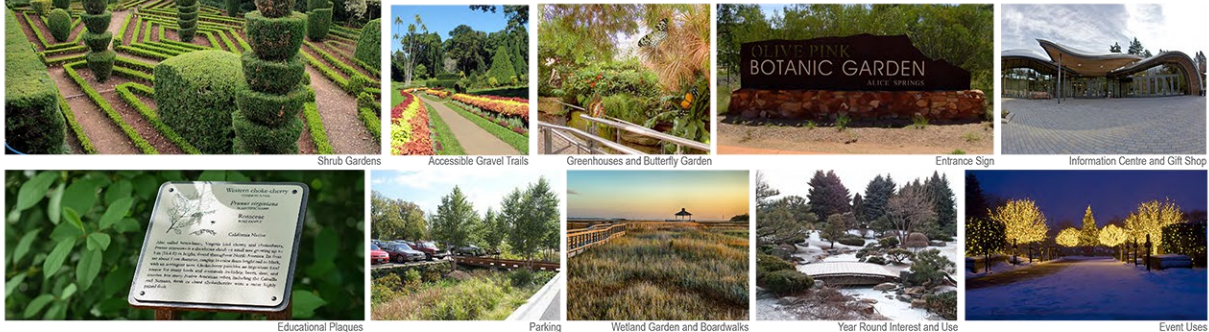


Comfort Station



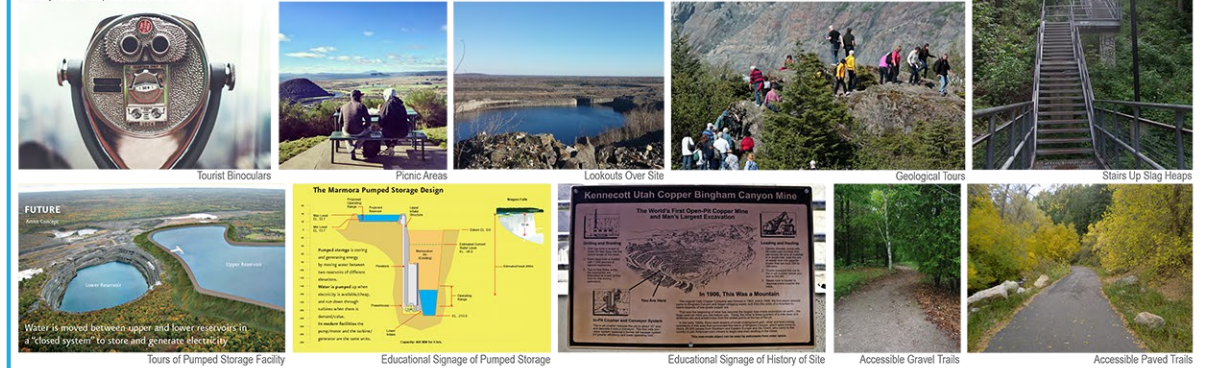
ALL-SEASON BOTANICAL GARDENS

The Recharge Marmora site is also home to All-Season Botanical Gardens that welcome visitors all year round with a Gift Shop and Information Centre. The Gardens offer greenhouses, accessible paved trails throughout the various gardens including a Wetland Garden, a Mosquito Repellent Garden, a Butterfly Garden, as well as boardwalk access to Mud Lake. The All-Season Botanical Gardens hold potential to host events such as graduations, weddings, school trips, and other large party occasions.



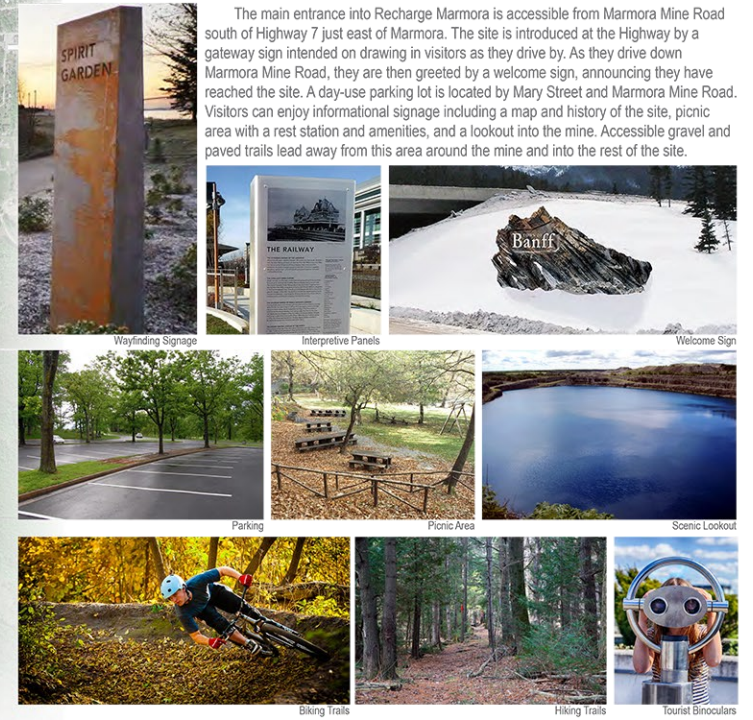
NORTHLAND POWER PUMPED STORAGE FACILITY

The tops of the slag heaps offer a scenic perspective of Marmora and the surrounding landscape. The west side of the slag heaps offer beautiful views of Crowe River and of the Village while the east side offers views of the surreal expanse of the Open Pit Mine/Lower Reservoir. The Upper Reservoir, a result of the pumped storage facility, is home to an accessible paved trail around the upper rim that visitors can reach from accessible gravel trails in the surrounding area. The Lower Reservoir boasts a walk through time as visitors walk into the open pit mine and can see the different layers of rock, fossils, and evidence of extraction exposed by the Marmoraton Mining Company. Tours of the pumped storage facility offers the opportunity for visitors to learn more about this unique facility and its processes.



MAIN ENTRANCE

The main entrance into Recharge Marmora is accessible from Marmora Mine Road south of Highway 7 just east of Marmora. The site is introduced at the Highway by a gateway sign intended on drawing in visitors as they drive by. As they drive down Marmora Mine Road, they are then greeted by a welcome sign, announcing they have reached the site. A day-use parking lot is located by Mary Street and Marmora Mine Road. Visitors can enjoy informational signage including a map and history of the site, picnic area with a rest station and amenities, and a lookout into the mine. Accessible gravel and paved trails lead away from this area around the mine and into the rest of the site.



VISITOR CENTRE AND EDUCATION AREA

Located at the centre of the site is the Visitor Centre which hosts a gift shop, information centre, a mining and earth science museum, a gallery, an eatery with a patio on a green roof, a glass balcony with tourist binoculars and pedestrian bridges linking to accessible paved and gravel trails, day use parking, bus parking, a trail into the open pit mine, a trail around the first tier from the top of the mine with lookouts and picnic areas, artistic water level markers in the mine, tour information of the site, educational signage of the mine and its processes, and a zip line. Further to the south of the site is the Education Area with an education building, accessible gravel trails, day-use parking, and Hastings Heritage Trail user parking.



VISION



NOTE: Implementation of the Master Plan will remain subject to the completed construction of the pumped storage facility, including any necessary barriers, controlled points or other design elements required for the facility to ensure its effective, safe, secure, and unimpeded operation.